

**BULL**  
MARKET



## WEEKLY EQUITY REPORT

25 June to 01 July 2017

Indira Securities Pvt. Ltd.

[www.indiratrade.com](http://www.indiratrade.com)

# Keep an Eye on Changing Market Place...



## TOP STORIES THIS WEEK

- On the global front, growth in the eurozone's manufacturing and services sector slowed in June, data showed on Friday, 23 June 2017. Markit's flash eurozone PMI composite output index came in at 55.7 in June, a five-month low.
- Adani Ports and Special Economic Zone (APSEZ) rose 1.35%. The company said Moody's has changed its outlook on the company to stable from negative. Moody's has re-affirmed its investment grade rating at Baa3 on APSEZ. The announcement was made during market hours on 19 June 2017.
- Drug major Lupin lost 6.2%. Media reports suggested that Lupin's Pithampur Unit 3 has been issued 5 observations by the US Food and Drug Administration (USFDA). Meanwhile, Lupin announced during market hours on 22 June 2017, the launch of its Desoximetasona Cream USP, 0.05% and Desoximetasona Cream USP, 0.25% having received an approval from the United States Food and Drug Administration (FDA) earlier.
- Index heavyweight and housing finance major HDFC advanced 0.72%. The company filed term sheet for issuing secured redeemable non-convertible debentures worth Rs 700 crore on private placement basis. HDFC said that the coupon rate on debentures is 7.21% per annum. The tenor of the debentures is one year 93 days, with redemption date being 24 September 2018. The announcement was made after market hours on 21 June 2017.

## WEEKLY INDICES

INDEX	CLOSE	PREV. CLOSE	CHANGE %
SENSEX	31128	31056	0.23
NIFTY	9574	9588	0.15
MIDCAP	14538	14807	1.82
SMLCAP	15381	15667	1.83
METAL	10986	11115	1.16
OIL&GAS	13305	13686	2.78
AUTO	23614	24111	2.06
TECK	5520	5536	0.29
BANKEX	26618	26589	0.11
IT	9853	9883	0.30
FMCG	10210	10137	0.72
HC	14019	14147	0.90
PSU	8191	8453	3.10
CD	15817	15971	0.96
POWER	2009	2227	9.79
CG	17282	17455	0.99
REALTY	2050	2090	1.91

## GLOBAL INDICES

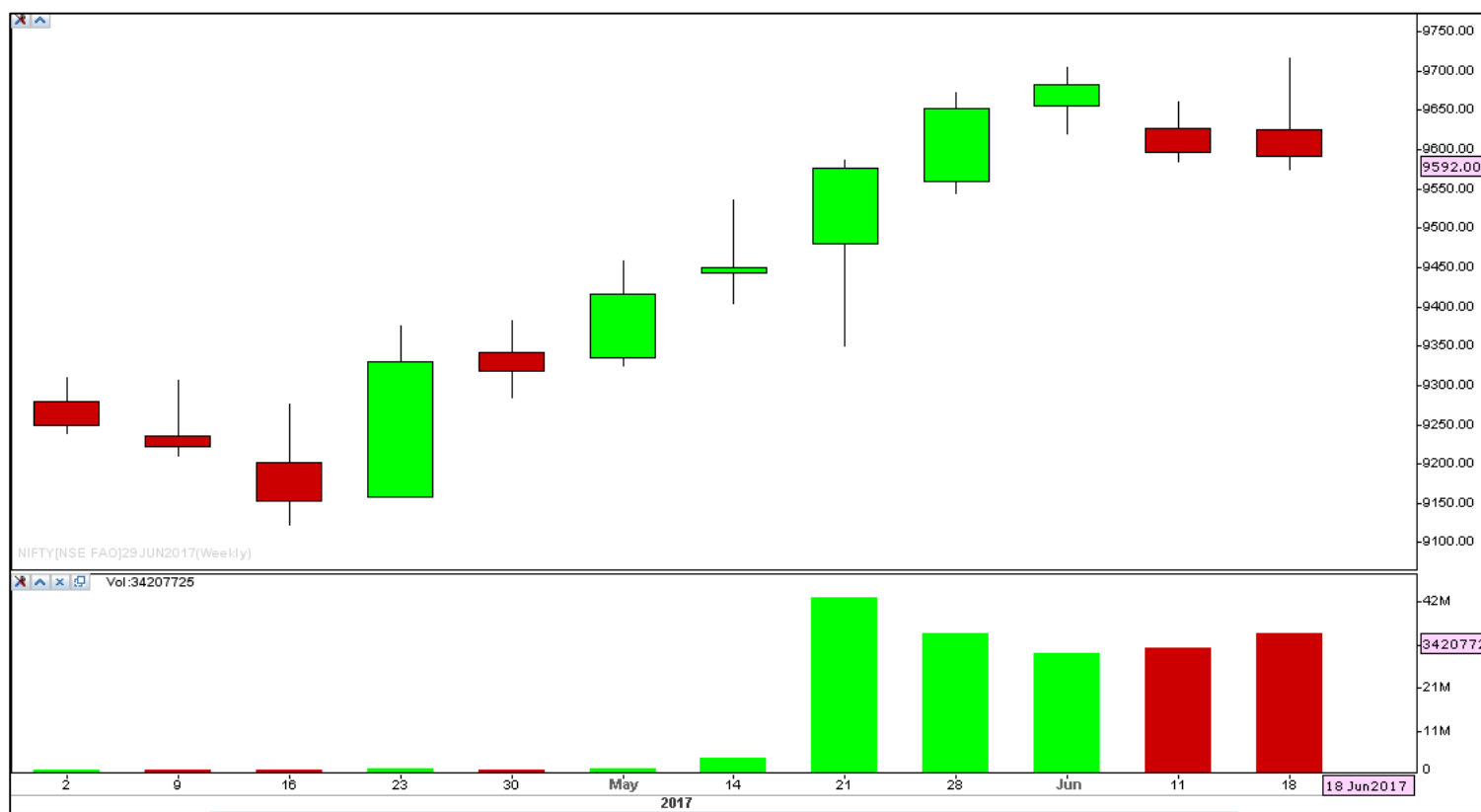
INDEX	CLOSE	PREV. CLOSE	CHANGE %
DOW	21409	21384	0.12
NASDAQ	6236	6151	1.38
FTSE	7446	7463	0.23
NIKKEI	20221	19943	1.39
HANGSENG	25906	25626	1.09

## TOP GAINERS WEEKLY

SCRIPT	PRICE	CHANGE %
JaiprakashAssociates	18.78	+26.29
RelianceCommu.Ltd	21.20	+11.29
Balkrishna Ind.	1700	+10.35
Reliance Def.& Eng.	60.80	+9.95
GMR Infrastructure L	21.30	+9.51

## TOP LOSERS WEEKLY

SCRIPT	PRICE	CHANGE %
Godrej Consumer Prod	953	-48.97
Videocon Industries	17.20	-22.52
Central Bank	86	-13.74
Wockhardt Ltd.	566.60	-10.40
Fortis Healthcare	172.30	-9.62

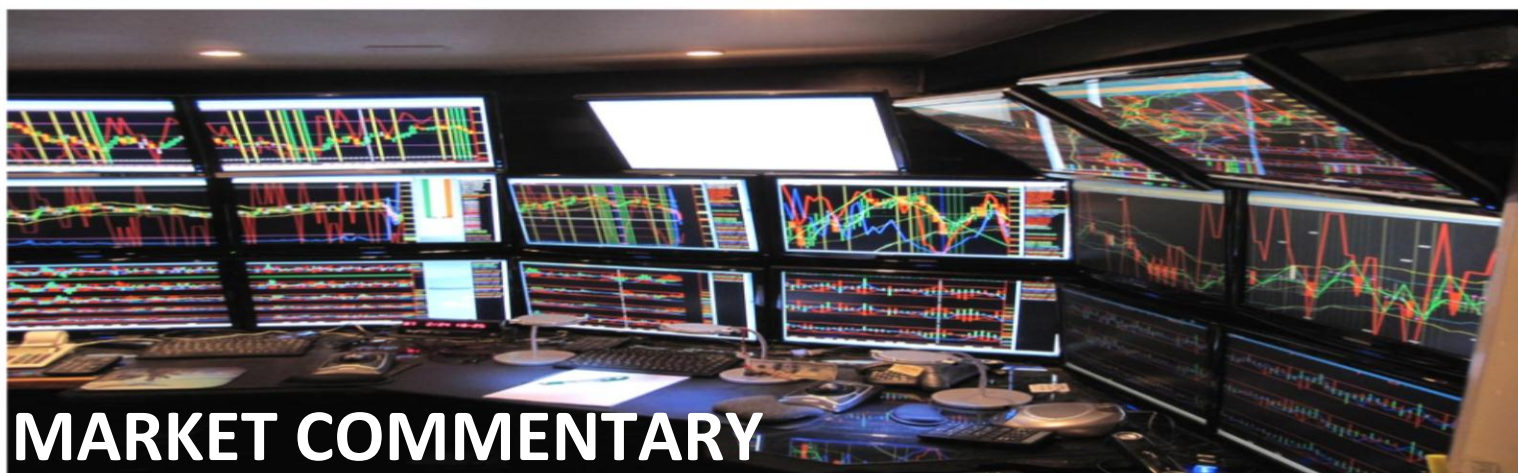


### SUPPORT AND RESISTANCE

S3	S2	S1	Nifty	R1	R2	R3
9517	9567	9598	9648	9679	9729	9761

### MOVING AVERAGE

MA20	MA50	MA100	MA200
9628	9452	9208	8815



# MARKET COMMENTARY

The barometer index, the S&P BSE Sensex, fell 152.53 points or 0.49% to settle at 31,138.21. The Nifty 50 index fell 55.05 points or 0.57% to settle at 9,574.95. Selling in bank shares put pressure on key benchmarks. The Sensex hit its lowest closing level in one week. The Nifty hit its lowest closing level in more than four weeks.

For the next week Nifty likely to trade in the range between 9510-9610.

## STOCK AT 52 HIGH

SCRIPT	CMP
Aditya Birla	65.10
Almondz Global	20.10
Apcotex Ind	413.35
Balkrishna Ind	1697.10
Colgate	1111.30

## STOCK AT 52 LOW

SCRIPT	CMP
3i Infotech	4.15
63 Moons Tech	62.05
Accel Frontline	50
Alembic Pharma	511.90
Ankit Metal	1.35

## FII ACTIVITY

DATE	FIGURES IN CRORE
19/6	-250.39
20/6	-312.84
21/6	-152.82
22/6	+198.68
23/6	+269.95
<b>NET</b>	<b>-247.41</b>

## DII ACTIVITY

DATE	FIGURES IN CRORE
19/6	+529.90
20/6	+477.13
21/6	-41.39
22/6	+455.21
23/6	-45.78
<b>NET</b>	<b>1375.07</b>

## WEEKLY STOCK IDEA

SCRIPT	B/S	CMP	TARGET
AMBUJA CEMENT	B	243.30	255
HIND UNILEVER	B	1097.90	1130
ICICIBANK	B	291.85	304
TATASTEEL	B	507.25	522
CIPLA	B	539	580

## VOLUME BREAKOUT STOCKS

SCRIPT	CMP
Shriram EPC	26.65
Himatsingka Sei	352.60
Healthcare Glob	247.90
Tainwala	-502
HT Media	83.50

Buy on dips & Sell on rise with Stop-loss of 3%





## WEEK AHEAD

### BOARD MEETING AND RESULTS THIS WEEK:

#### 26 JUNE:

#### 27 JUNE:

- NECKLIFE, WELTI, CAPF, APOLLOTYRE

#### 28 JUNE:

- BFINVEST, BOMDYEING, KHODAY, RADHIKAJWE, HCC, SATIN, INDIANHUME, ENGINEERSIN, ANGIND

#### 29 JUNE:

- CMI, NUCLEUS, CENTUM, HDFCBANK, STRTECH, GULPOLY, BHARATFIN, TEAMLEASE, JAYAGROGN

#### 30 JUNE:

- DEEPAKFERT, SIEL, TATACOFFEE, HEROMOTOCO, JSWENERGY



Scan to visit us



Join Us :

# WOMEN Desk



**‘Ramavat House’ E-15 Saket Nagar , Indore-452018**

**Call: 0731-4097170-173 Mob: +91-9303172345 / Toll Free: 18001030059 / SMS: <INDIRA> to 56070**

## DISCLAIMER

This report is for private circulation within the Indira Group. This report is strictly confidential and for information of the selected recipient only and may not be altered in any way, transmitted to, copied or distributed, in part or in whole, to any other person or to the media or reproduced in any form. This report should not be construed as an offer or solicitation to buy or sell any securities or any interest in securities. It does not constitute a personal recommendation or take into account the particular investment objectives, financial situations, or any such factor. The information, opinions estimates and forecasts contained here have been obtained from, or are based upon, sources we believe to be reliable, but no representation of warranty, express or implied, is made by us to their accuracy or completeness. Opinions expressed are our current opinions as of the data appearing on this material only and are subject to change without notice.